

# Living in Poverty

Stigmatisation, shame and the struggle for recognition



EASSW-UNAFORIS 2017 European Conference

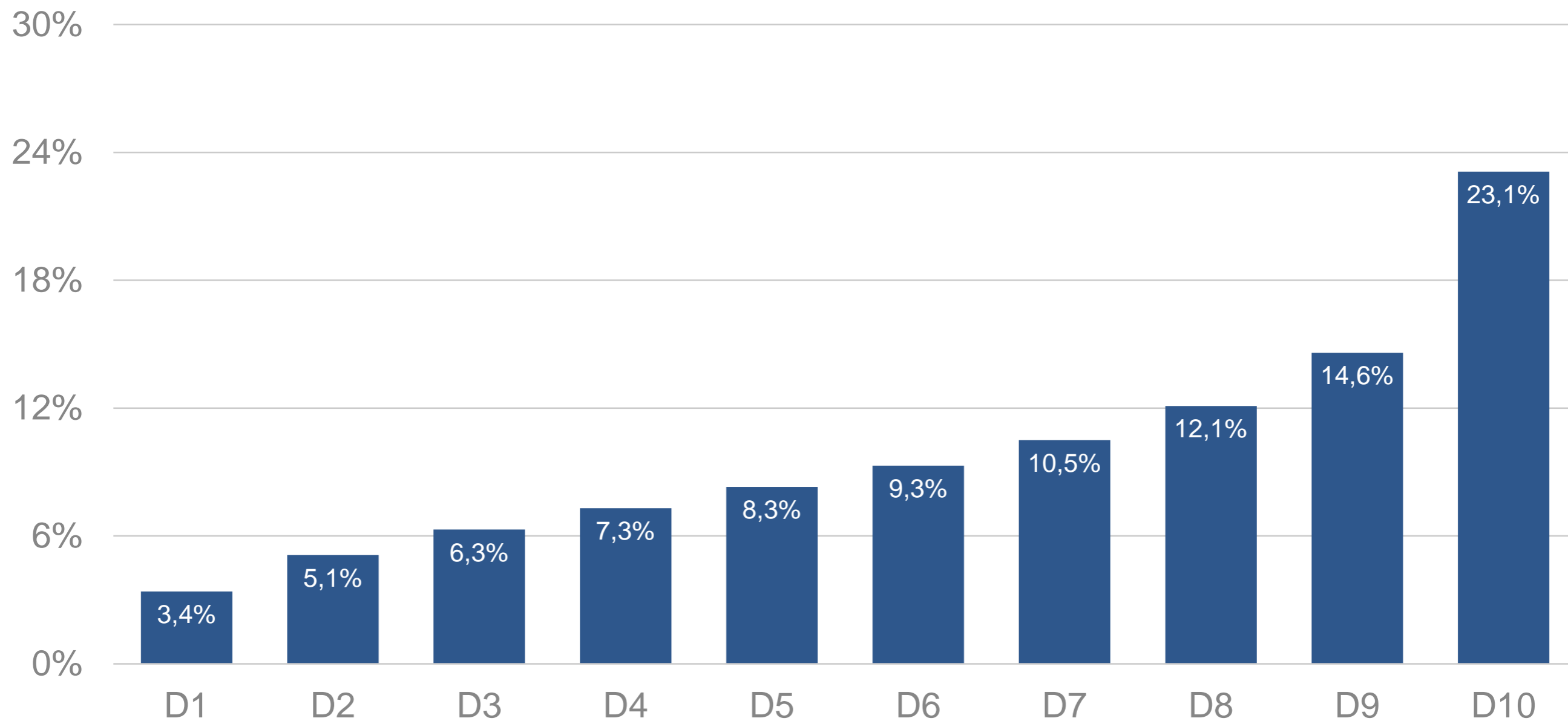
Social Work Education in Europe:  
Challenging Boundaries, Promoting a Sustainable Future

JUNE 27, 28 AND 29, 2017

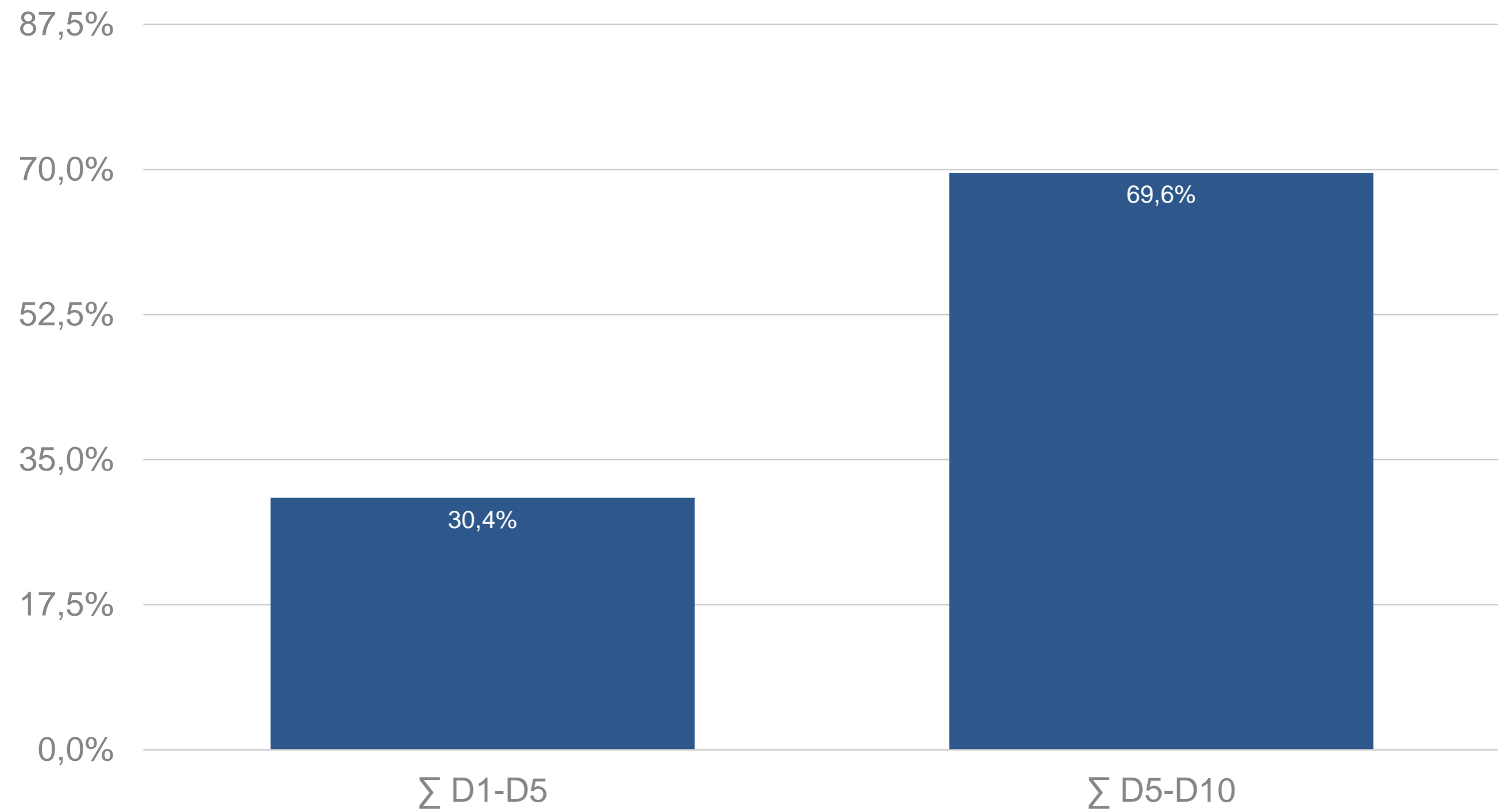
# Living in Poverty

(the quantitative side of the story)

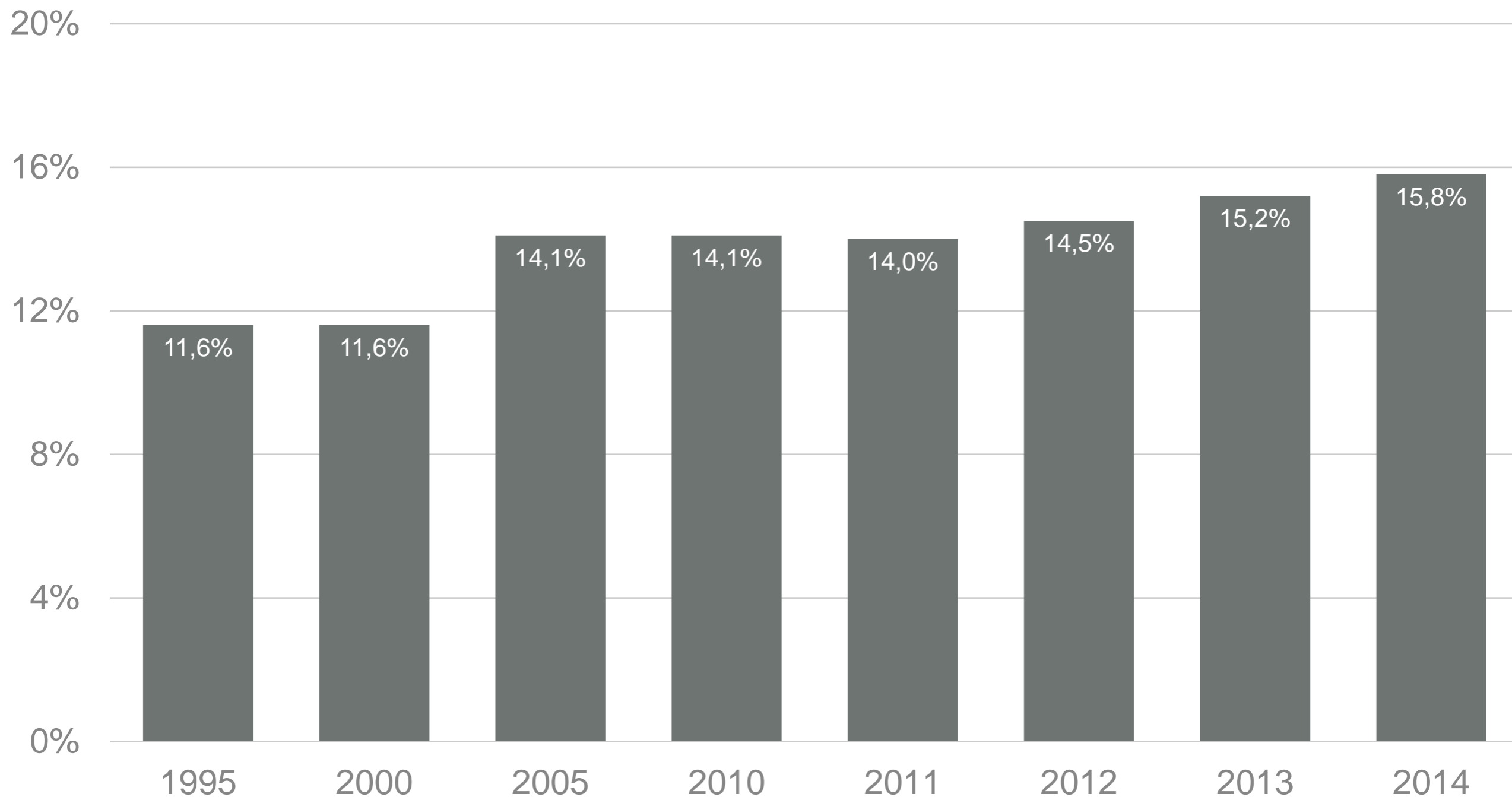
Income Distribution Source: Report on Poverty and Wealth of the German Government (2017). SOEP Data for 2014



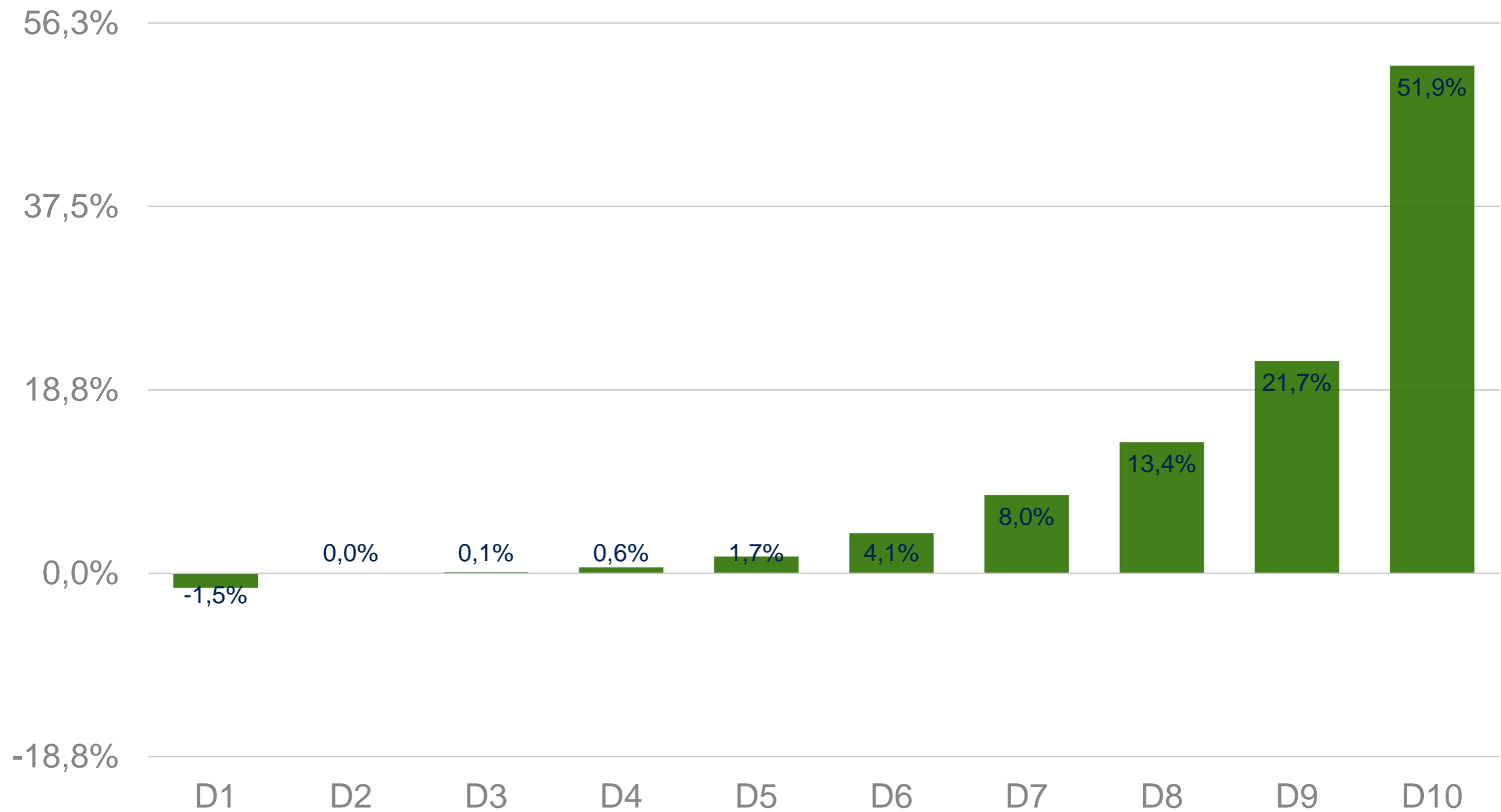
Income Distribution Source: Report on Poverty and Wealth of the German Government (2017). SOEP Data for 2014



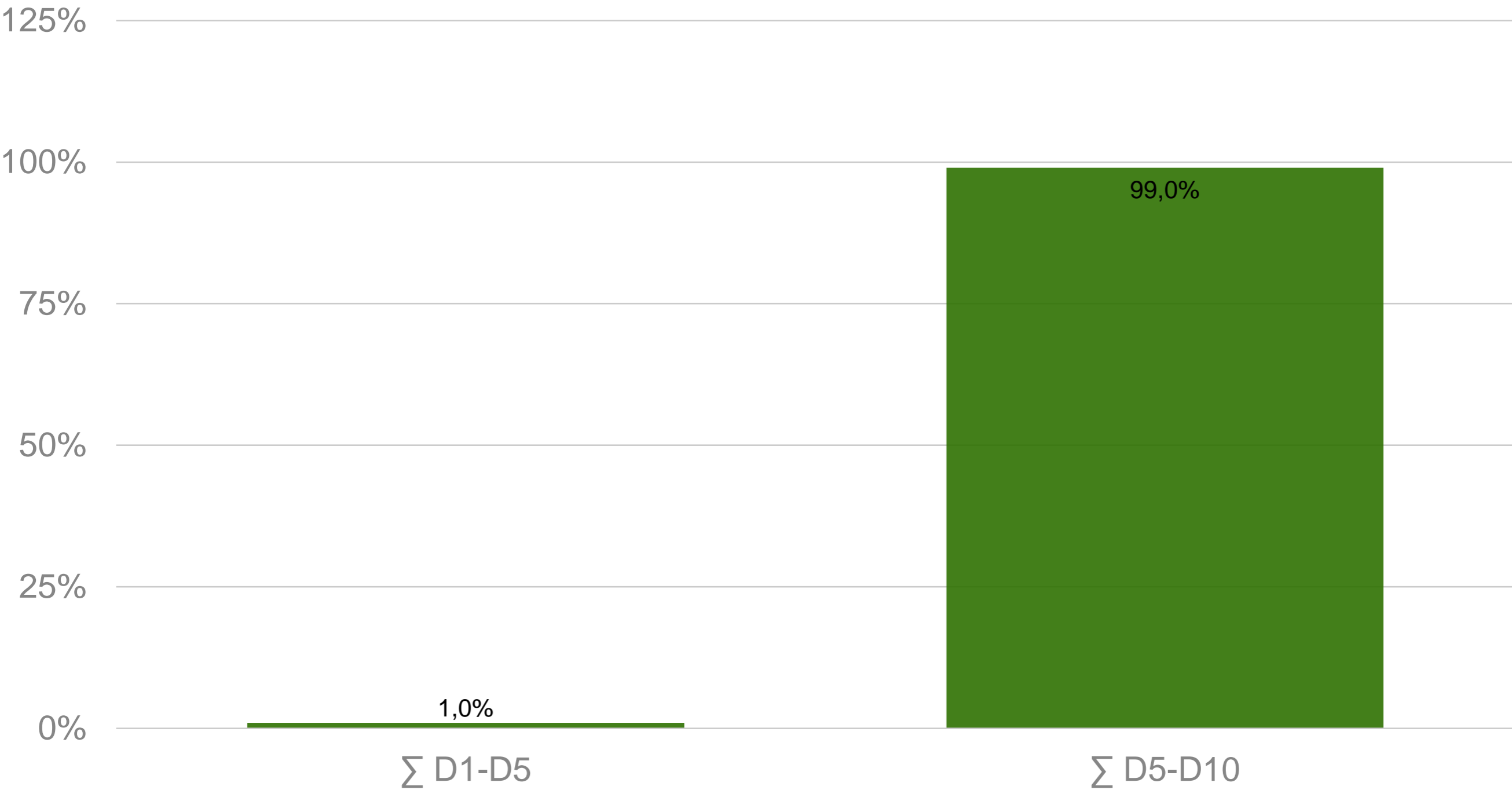
People in Risk of Poverty (60% of median income) Source: Report on Poverty and Wealth of the German Government (2017). SOEP Data



Wealth Distribution Source: Report on Poverty and Wealth of the German Government (2017). SOEP Data for 2014



Wealth Distribution Source: Report on Poverty and Wealth of the German Government (2017). SOEP Data for 2014



# Living in Poverty II

(the subjective side – or what it means to live in poverty)



# Living in Poverty

*Irene Mohn:*

... I even drove past the food bank a lot of times, even with a bag in the car, but I never went in, because I was ashamed to stand there. Because you have to stand outside in the queue and someone could see you there. Yes, while one usually tries to appear completely different on the outside ...

# Living in Poverty

*Irene Mohn:*

... only to always eat what is left over from others that is degrading ...

# Living in Poverty

*Natalia König „quotes“ her daughter:*

...no, i can't [go to the food bank] . If someone would see me, I would be finished. Then I would have to leave school ...

# Stigma and Shame

# Stigma and shame

- Stigma as negative classifications
- Social attribution
- Separation from others

# Shame

Shame as a specific emotion:

- Emotions as a judging response to experiences
- Within emotions the experiences become a meaning

# Shame

The foundation of shame:

- Norms & values that are part of the self (the society within us)
- It forms an ideal-self
- It regulates social behaviour

# Shame

The emotion of shame:

- It occurs when the subject finds itself in deviation to its ideal-self (or in identity with a negative idea)
- It expresses the violation of social norms & values that are part of the self of the subject



# Recognition and Disrespect

# Recognition

	Love	Rights	Solidarity
Mode of recognition	emotional support	cognitive respect	social esteem
Dimension of personality	needs and emotions	moral responsibility	traits and abilities
Forms of recognition	primary relationships (love, friendship)	legal relations (rights)	community of value (solidarity)
Practical relation-to-self	basic self-confidence	self-respect	self-esteem

(Honneth 1992)

# Recognition and disrespect

	Love	Rights	Solidarity
Mode of recognition	emotional support	cognitive respect	social esteem
Dimension of personality	needs and emotions	moral responsibility	traits and abilities
Forms of recognition	primary relationships (love, friendship)	legal relations (rights)	community of value (solidarity)
Practical relation-to-self	basic self-confidence	self-respect	self-esteem
Forms of disrespect	abuse and rape	denial of rights, exclusion	denigration, insult
Threatened component of personality	physical integrity	social integrity	honour', dignity

(Honneth 1992)

# Recognition and disrespect

- „optimal identity formation“
- theory of conflict
- disrespect as a driving force for the struggle of recognition
- love, rights and solidarity as societal and historical dimensions within subjects struggle to gain recognition

# (vulnerable) subjectivity

the core of a critical theory of social work

# (vulnerable) subjectivity

- The concept stresses the general vulnerability of the subject itself
- It informs a theoretical perspective in order to overcome conditions that prevent the existence as a subject
- experiences of suffering, shame, disrespect as negative point of reference for a normative argument within a critical theory of social work

# Living in Poverty

Stigmatisation, shame and the struggle for recognition



EASSW-UNAFORIS 2017 European Conference

Social Work Education in Europe:  
Challenging Boundaries, Promoting a Sustainable Future

JUNE 27, 28 AND 29, 2017